

90°27'W

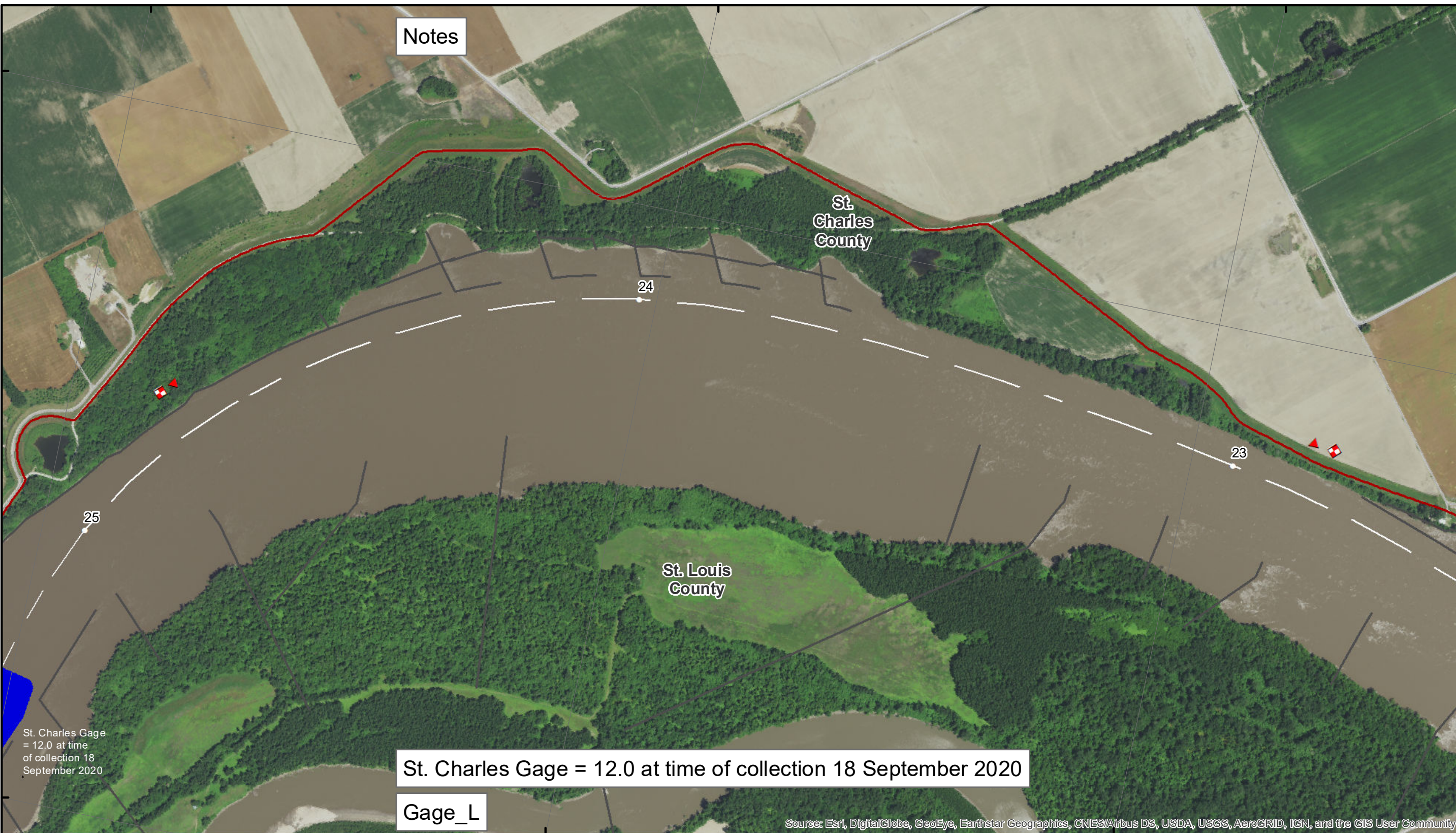
90°26'W

90°25'W

38°50'N

38°50'N

38°49'N



Notes

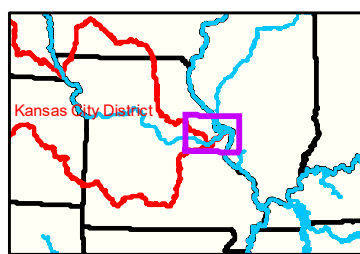
St. Charles County

St. Louis County

St. Charles Gage = 12.0 at time of collection 18 September 2020

Gage_L

Source: Esri, DigitalGlobe, GeoEye, Earthstar Geographics, CNES/Airbus DS, USDA, USGS, AeroGRID, IGN, and the GIS User Community



90°26'W

90°25'W

LEGEND

	< 8		< 8 ft		Green Passing		Green		Green CAN
	8 - 9		8 - 9 ft		Red Passing		Red		Red NUN
	9 - 9.5		9 - 10 ft		Green Crossing		Red		
	9.5 - 10		10 - 12 ft		Red Crossing		Junction		
	10 - 12		River Mile						
	12 - 14		Sailing Line						
	14 - 16		BSNP Structure						
	> 16		Levee						

Buoy

0 312.5 625 937.5 1,250 2,500 Feet

NOTES:
Horizontal Coordinate System: World Geodetic System of 1984 (WGS84), projected to the Universal Transverse Mercator (UTM) Zone 15 North. Distance units in U.S. Survey Feet.
Vertical Datum: Soundings are shown in feet and indicated depths are referenced to water surface at time of collection.
The information depicted on this map represents the results of a survey conducted on the date indicated and can only be considered to represent the general condition existing at that time.
The location of navigation aids are based on and provided by the U.S. Coast Guard.



DISCLAIMER: The U.S. Army Corps of Engineers (USACE) provides this information as a service to the public. It is not intended to be used for any purpose other than that for which it was provided. USACE makes no warranty, express or implied, regarding the accuracy, reliability, or completeness of the information. The user assumes all liability for any use of the information. The USACE is not responsible for any damage or loss resulting from the use of this information. The USACE is not liable for any damage or loss resulting from the use of this information. The USACE is not liable for any damage or loss resulting from the use of this information.

KANSAS CITY DISTRICT
MISSOURI RIVER AREA OFFICE

Submitted By:	MRAO
Reviewed By:	MRAO
Approved By:	MRAO

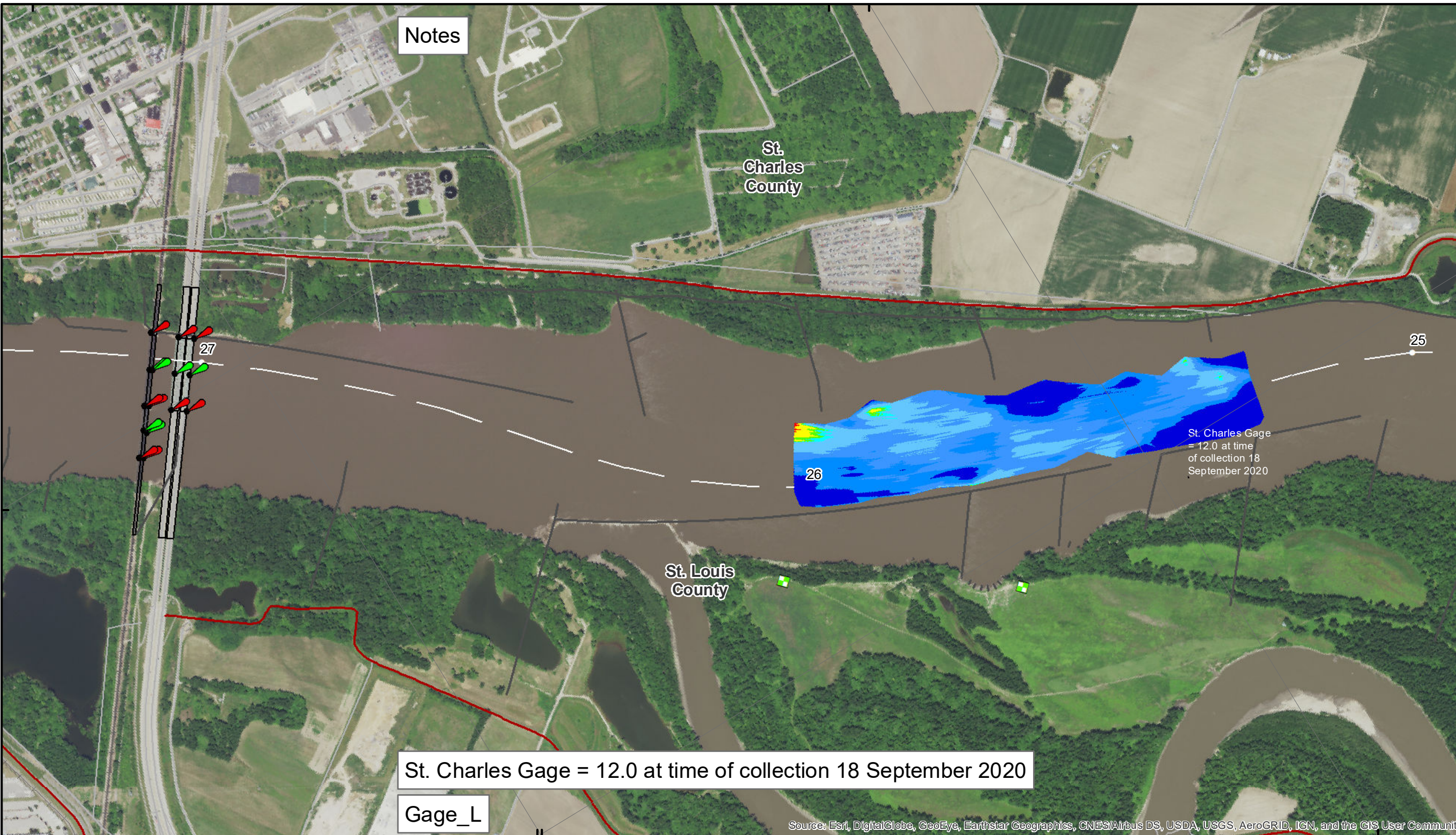
Survey Information

MO_01_LMR
MO_01_LMR_20200919_CS_25_0_25_9_SORT
19 September 2020

Sheet Number
11 of 46

38°48'N

90°28'W 38°49'N



Notes

St. Charles County

St. Louis County

St. Charles Gage = 12.0 at time of collection 18 September 2020

St. Charles Gage = 12.0 at time of collection 18 September 2020

Gage_L

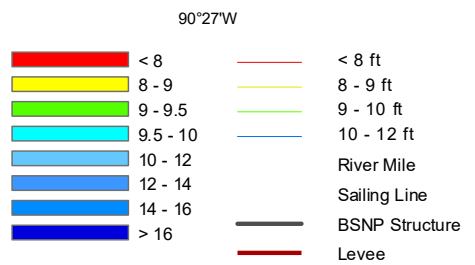
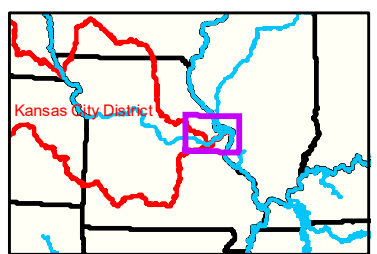
Source: Esri, DigitalGlobe, GeoEye, Earthstar Geographics, CNES/Airbus DS, USDA, USGS, AeroGRID, IGN, and the GIS User Community



DISCLAIMER: The U.S. Army Corps of Engineers (USACE) provides this information as a service to the public. It is not intended to be used for navigation or other purposes. The USACE makes no warranty, express or implied, for the accuracy, reliability, or completeness of the information. The user assumes all responsibility for the use of this information. The USACE is not liable for any damages or losses resulting from the use of this information. The USACE reserves the right to modify or discontinue this service without notice.

KANSAS CITY DISTRICT MISSOURI RIVER AREA OFFICE	
Submitted By:	MRAO
Reviewed By:	MRAO
Approved By:	MRAO

Survey Information
MO_01_LMR
MO_01_LMR_20200919_CS_25_0_25_9_SORT
19 September 2020

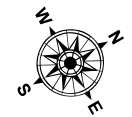
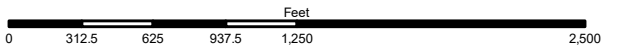


LEGEND

	Green Passing
	Red Passing
	Green Crossing
	Red Crossing

Buoy

	Green		Green CAN
	Red		Red NUN
	Junction		



NOTES:
Horizontal Coordinate System: World Geodetic System of 1984 (WGS84), projected to the Universal Transverse Mercator (UTM) Zone 15 North. Distance units in U.S. Survey Feet.
Vertical Datum: Soundings are shown in feet and indicated depths are referenced to water surface at time of collection.
The information depicted on this map represents the results of a survey conducted on the date indicated and can only be considered to represent the general condition existing at that time.
The location of navigation aids are based on and provided by the U.S. Coast Guard.

Sheet Number
12 of 46